

# NORTH LINCOLNSHIRE CCG ORGANISATIONAL STRUCTURE 2016/17.

## INDEX

Version 1.0. Issued 5-09-2016

- 1) NURSING & QUALITY DIRECTORATE (including CHC)
- 2) COMMISSIONING DIRECTORATE
- 3) FINANCE, INFORMATION & PERFORMANCE DIRECTORATE
- 4) CORPORATE DIRECTORATE
- 5) PRIMARY CARE DIRECTORATE (**NEW**)
- 6) LIST OF EXISTING & NEW POSTS

**A** = EXISTING STRUCTURE

**B** = NEW STRUCTURE

## KEY

**Light Blue boxes** = Posts funded by Programme Budgets (**Programme Posts**).

**Dark Blue boxes** = Posts charged against the Running Cost Allowance (**RCA Posts**).

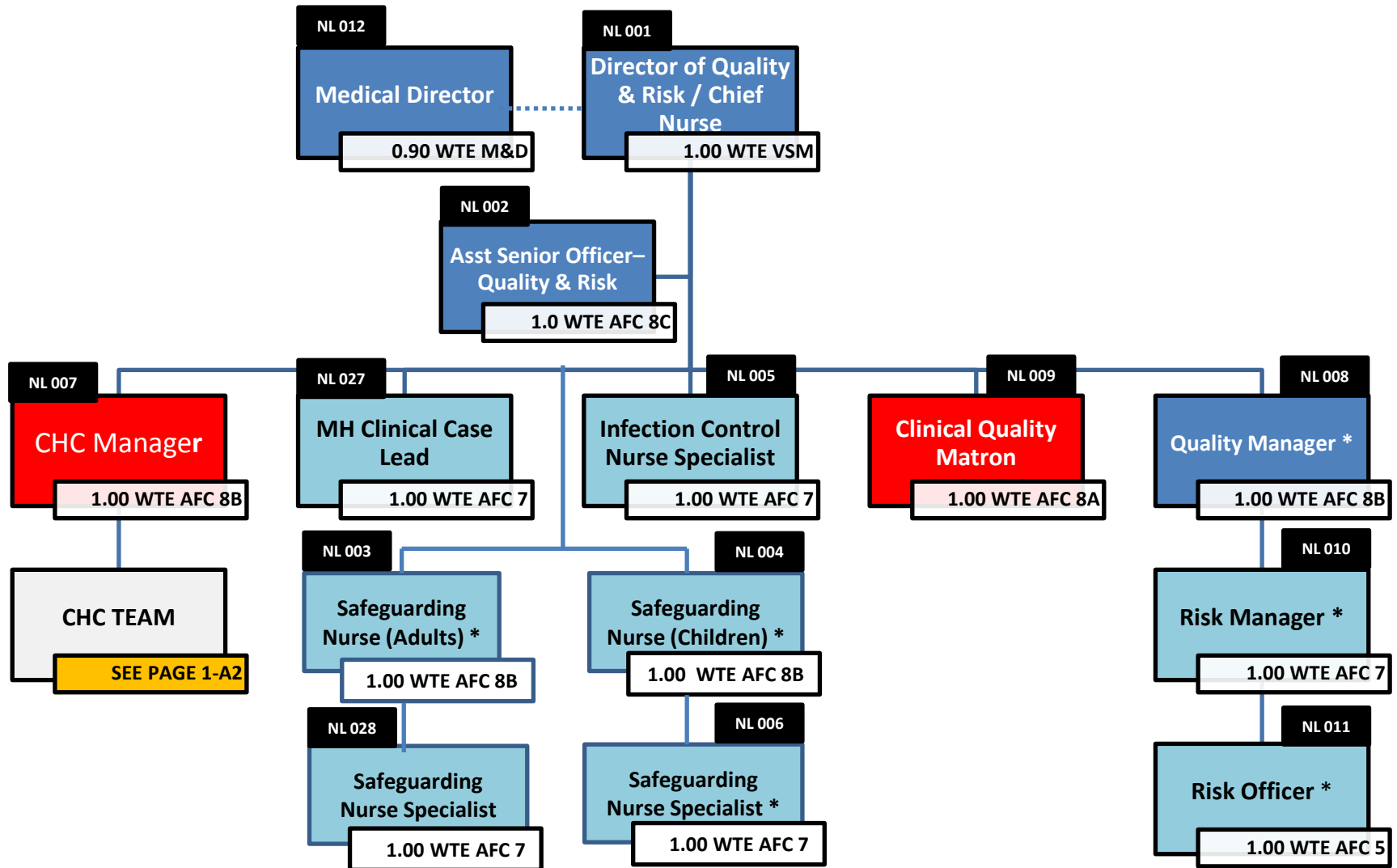
**Green Boxes** = External Links funded from Programme Budgets)

**Red Boxes** = Dis-established posts.

**Orange Boxes** = New or significantly changed posts

**Post Grades shown in Red**, with a **Note P** are Provisional bandings . This means that the post has been through a job evaluation process, but is awaiting consistency checking or other secondary confirmation process.

# 1A) EXISTING QUALITY & RISK DIRECTORATE STRUCTURE



\* Posts recharged 50% to NEL CCG

# 1B) NEW NURSING & QUALITY DIRECTORATE STRUCTURE

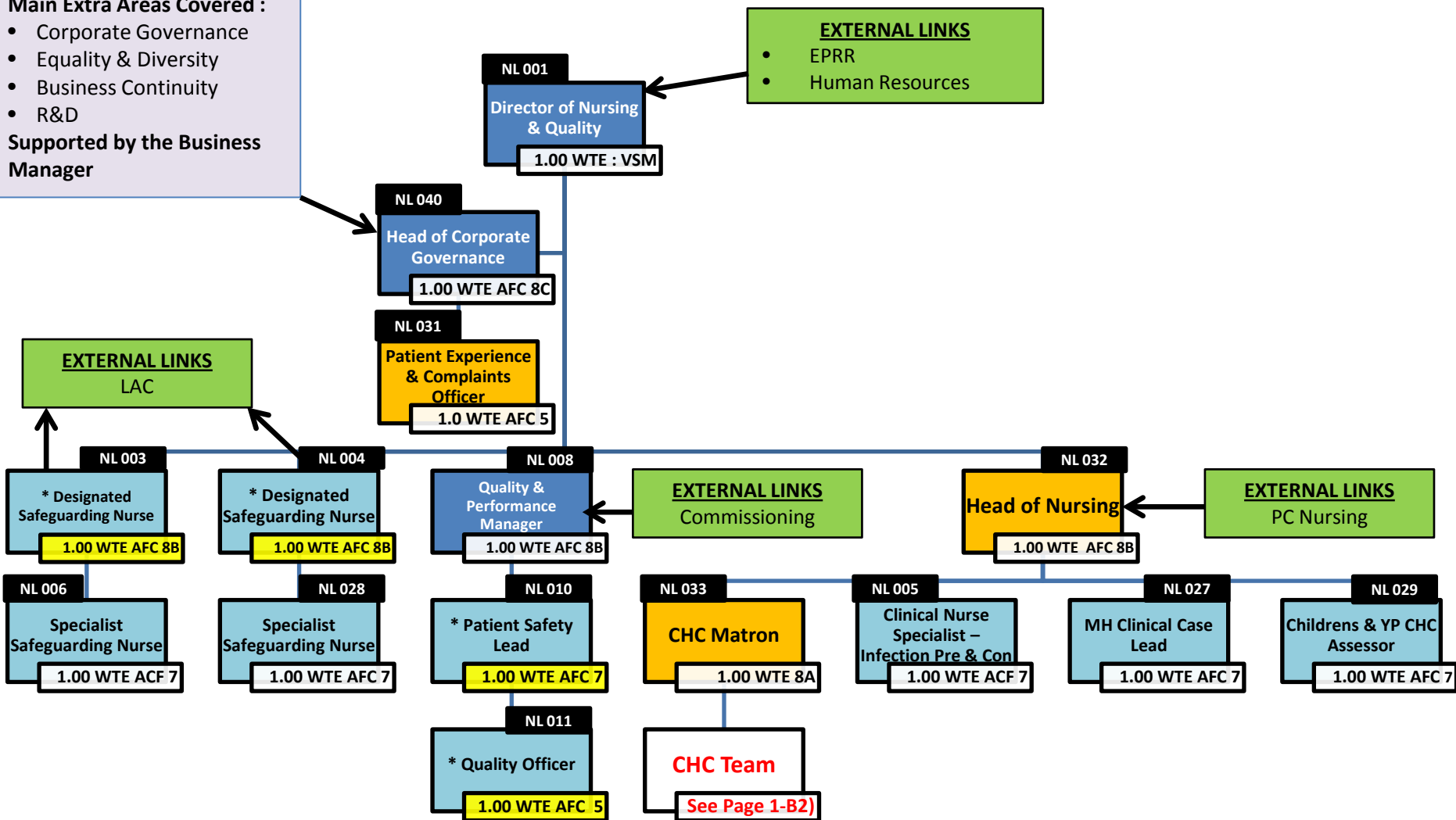
## Main Extra Areas Covered :

- Corporate Governance
- Equality & Diversity
- Business Continuity
- R&D

Supported by the Business Manager

## EXTERNAL LINKS

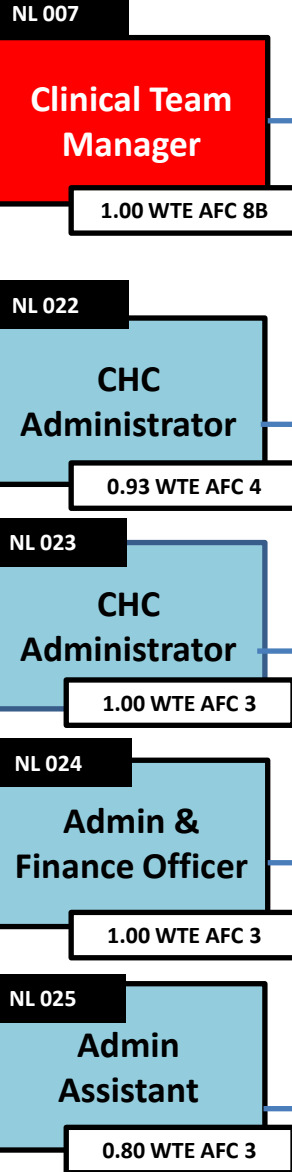
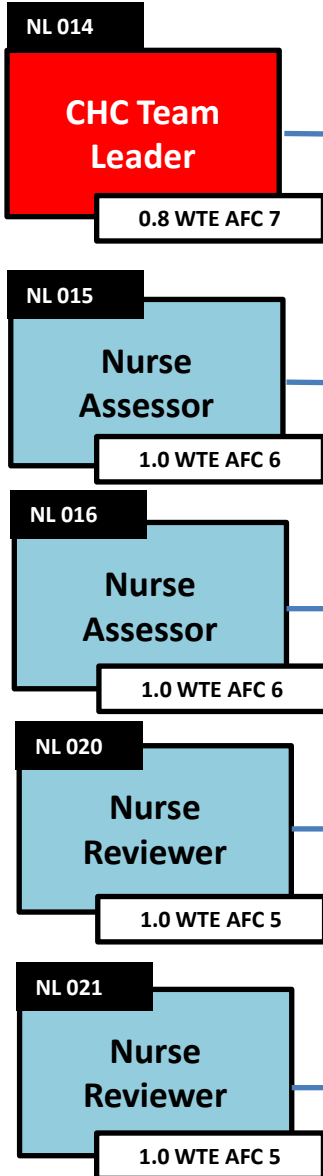
- EPRR
- Human Resources



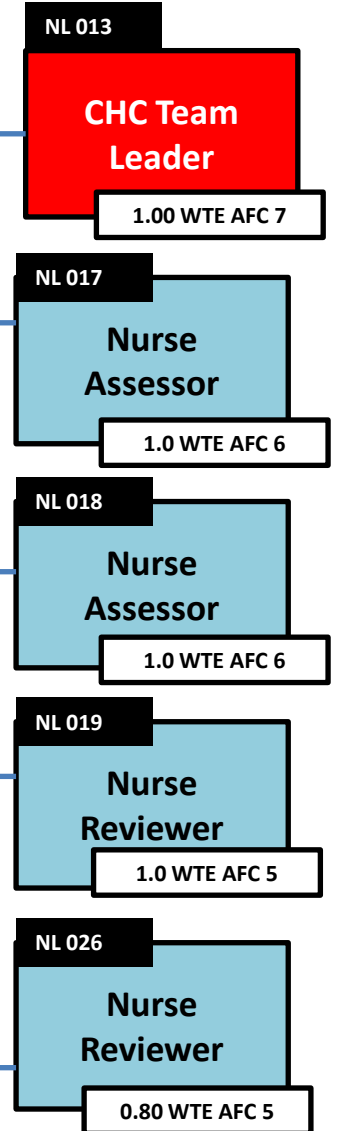
\* 50% of cost funded by NEL CCG

# 1-A2 EXISTING CONTINUING HEALTH CARE (CHC) TEAM STRUCTURE

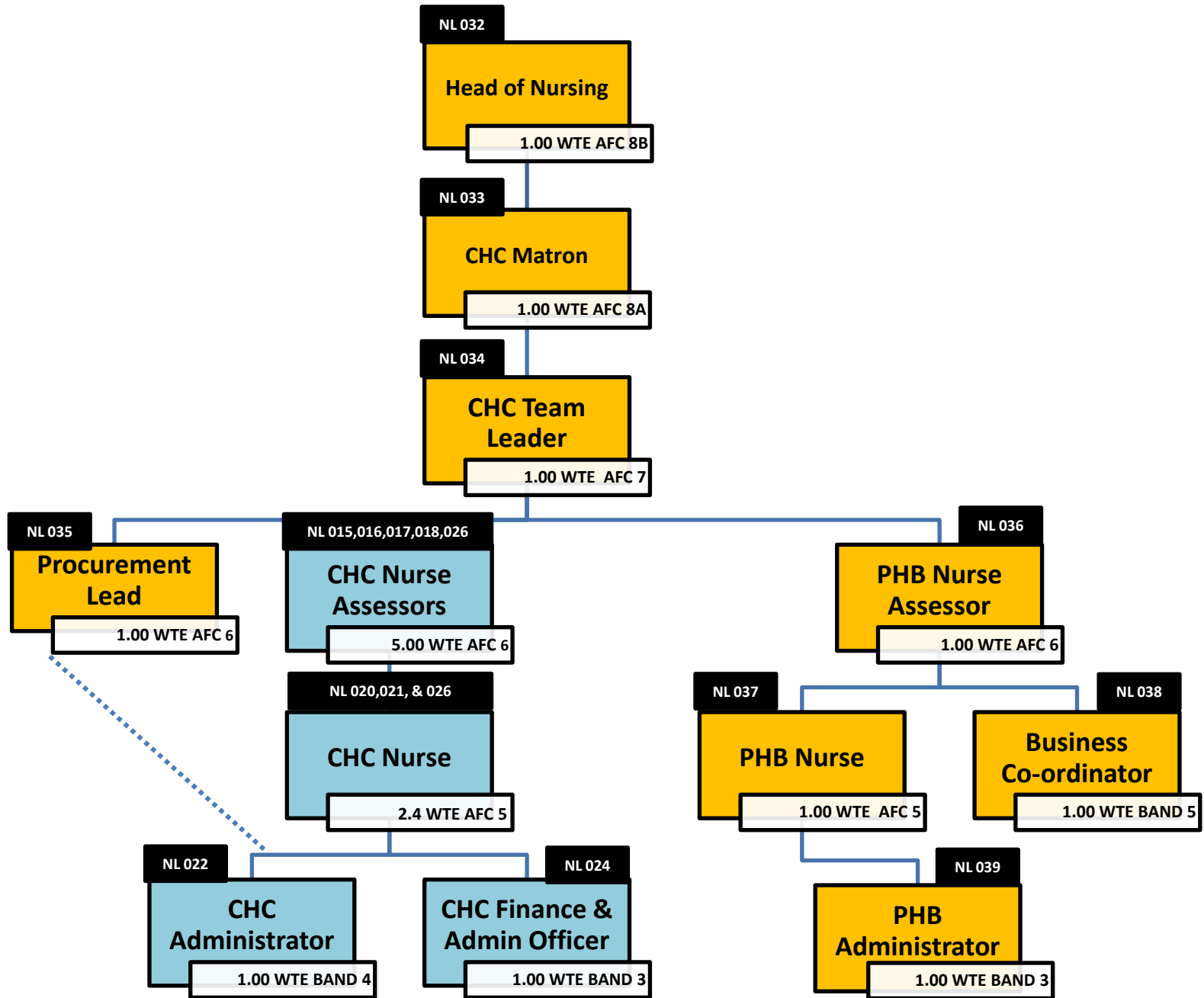
## CARE HOME REVIEWS



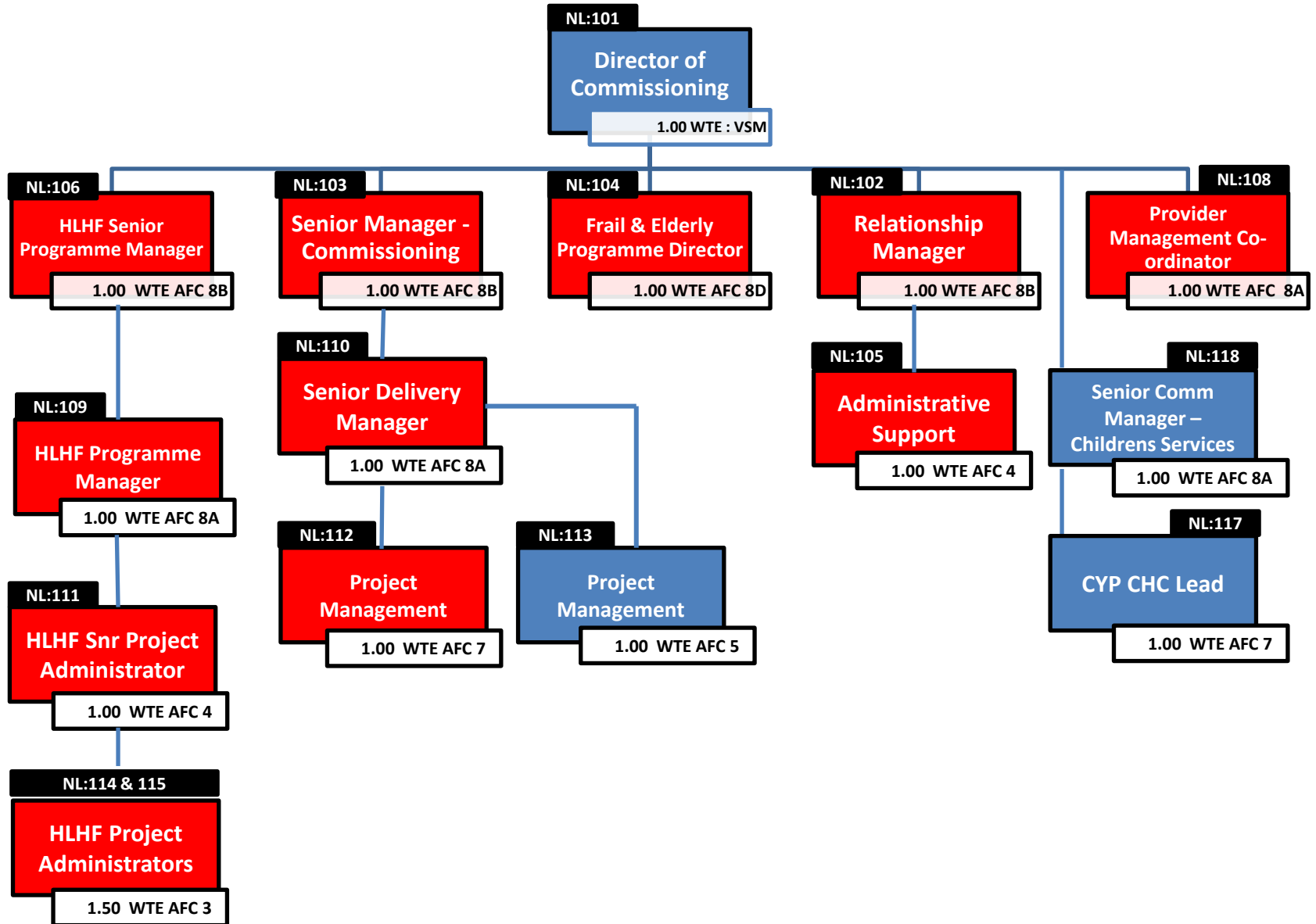
## OWN HOME REVIEWS



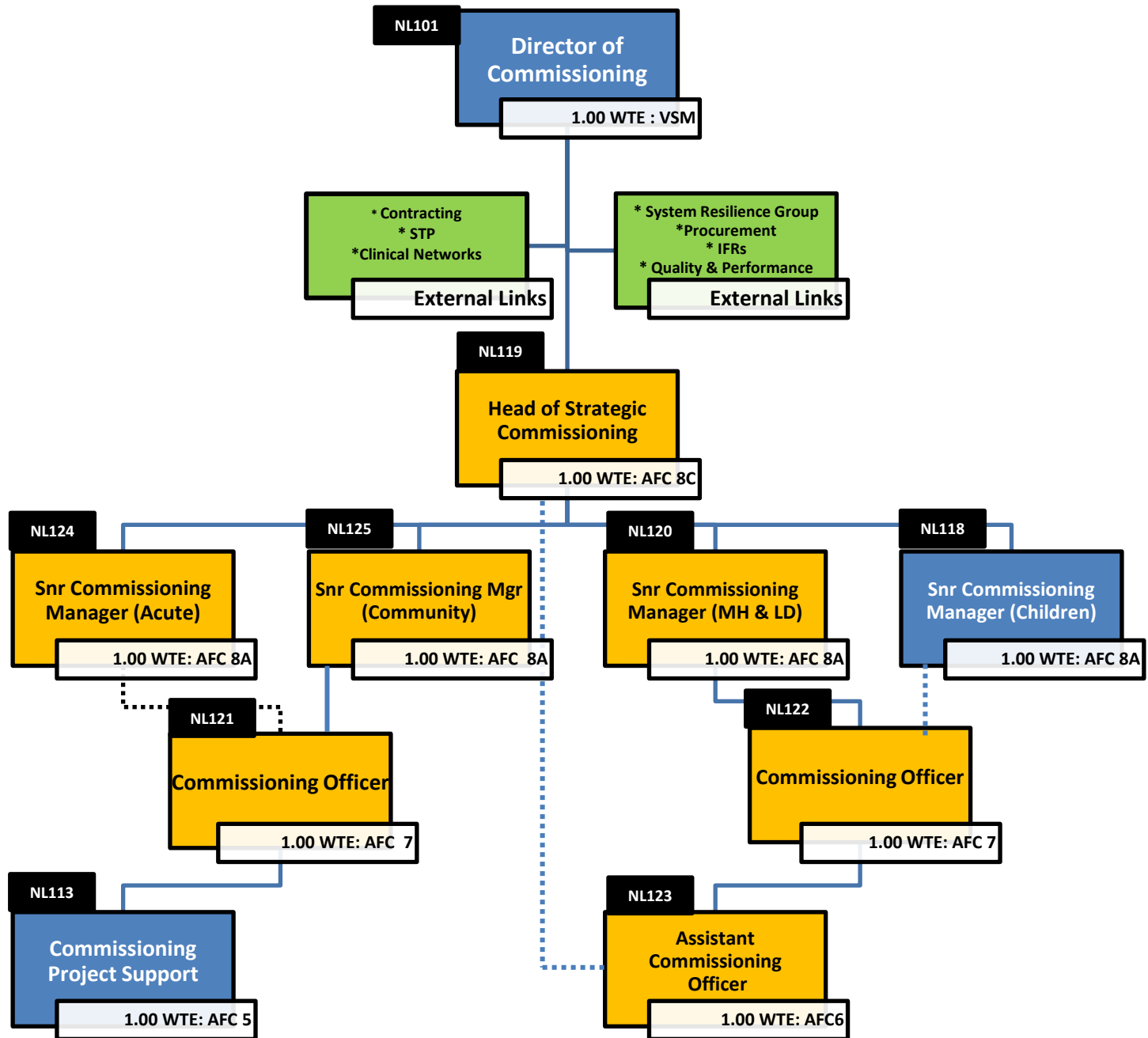
# 1-B2) NEW CONTINUING HEALTH CARE TEAM STRUCTURE



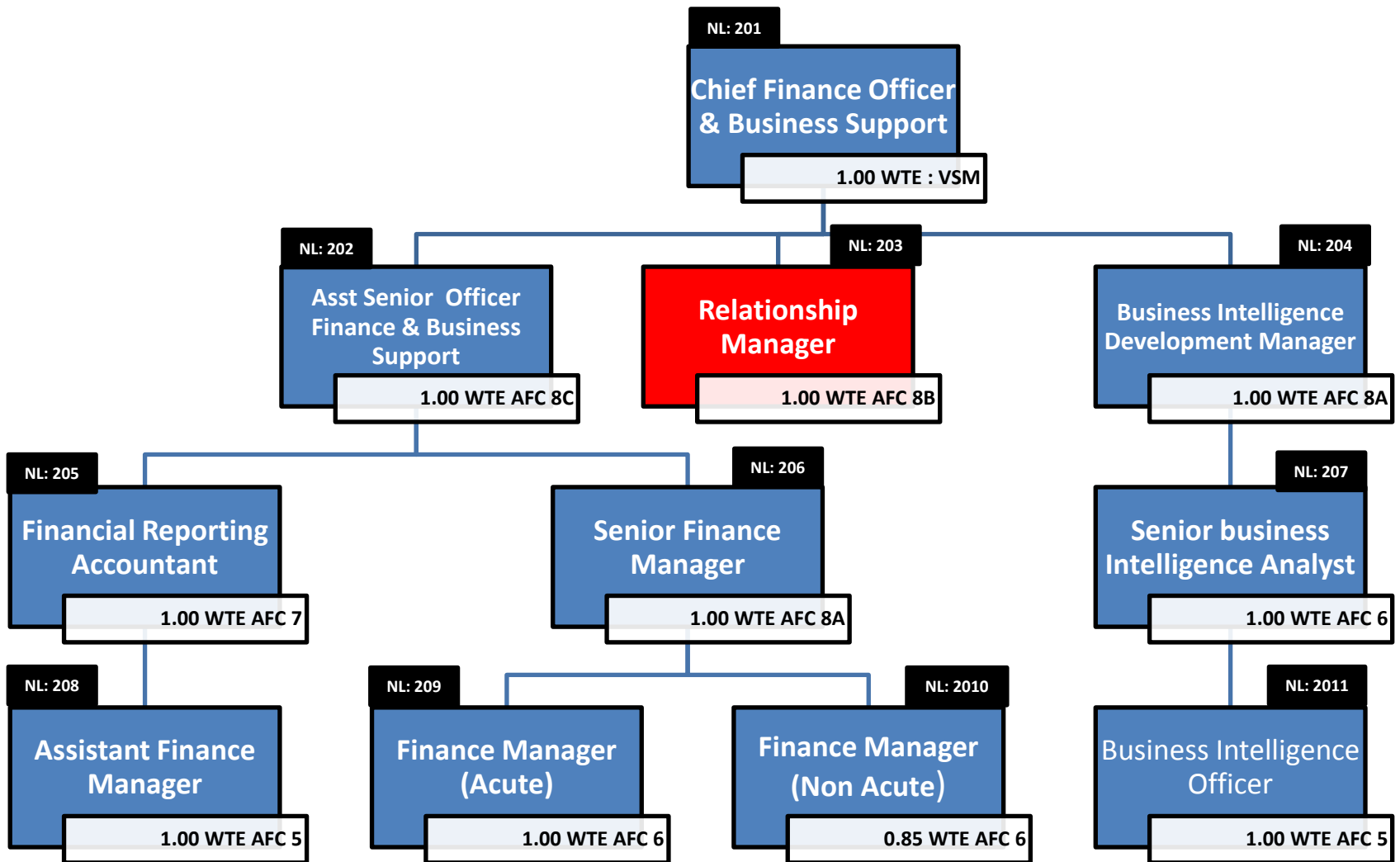
# 2A) EXISTING COMMISSIONING DIRECTORATE STRUCTURE



# 2B) NEW COMMISSIONING DIRECTORATE STRUCTURE



### 3A) EXISTING FINANCE, INFORMATION & PERFORMANCE DIRECTORATE STRUCTURE





# 3B) NEW FINANCE, INFORMATION & PERFORMANCE DIRECTORATE STRUCTURE

## Main Extra Areas Covered :

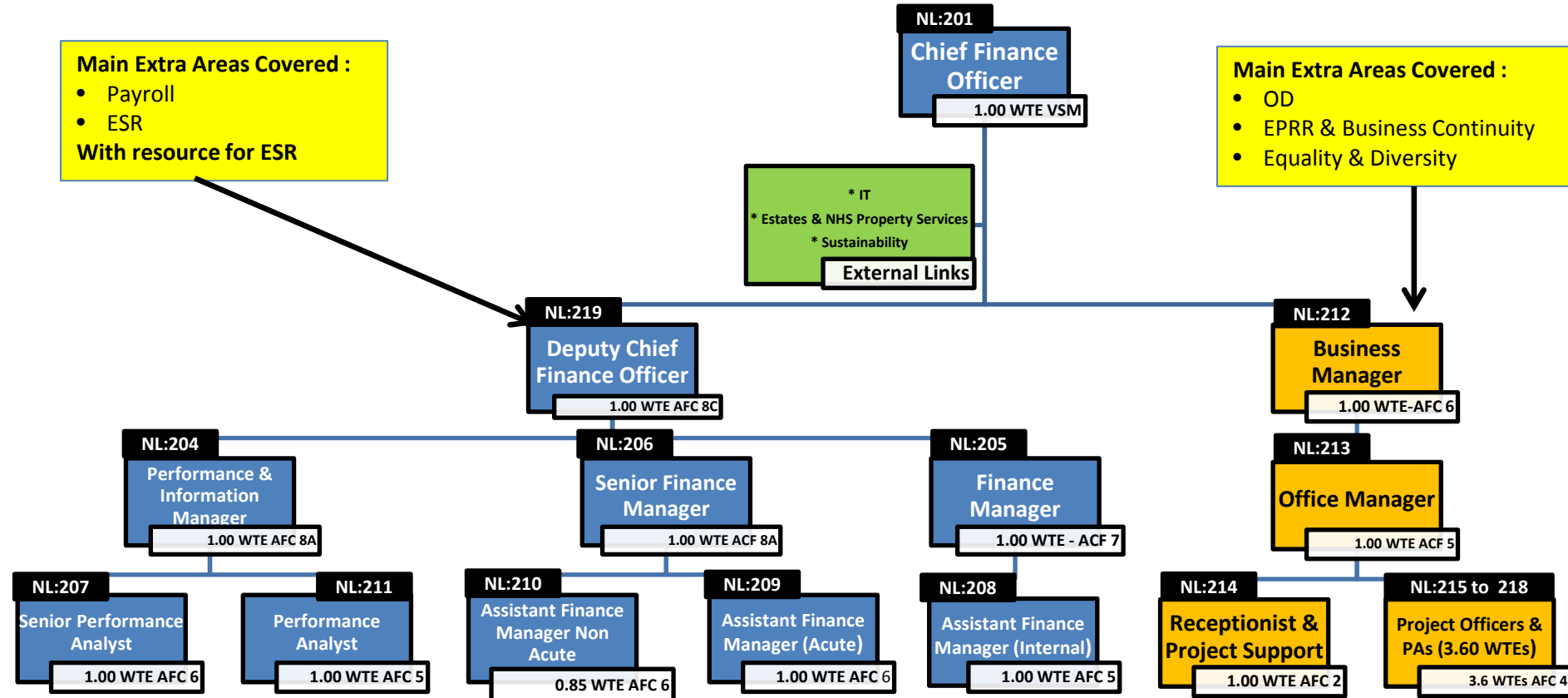
- Payroll
- ESR

With resource for ESR

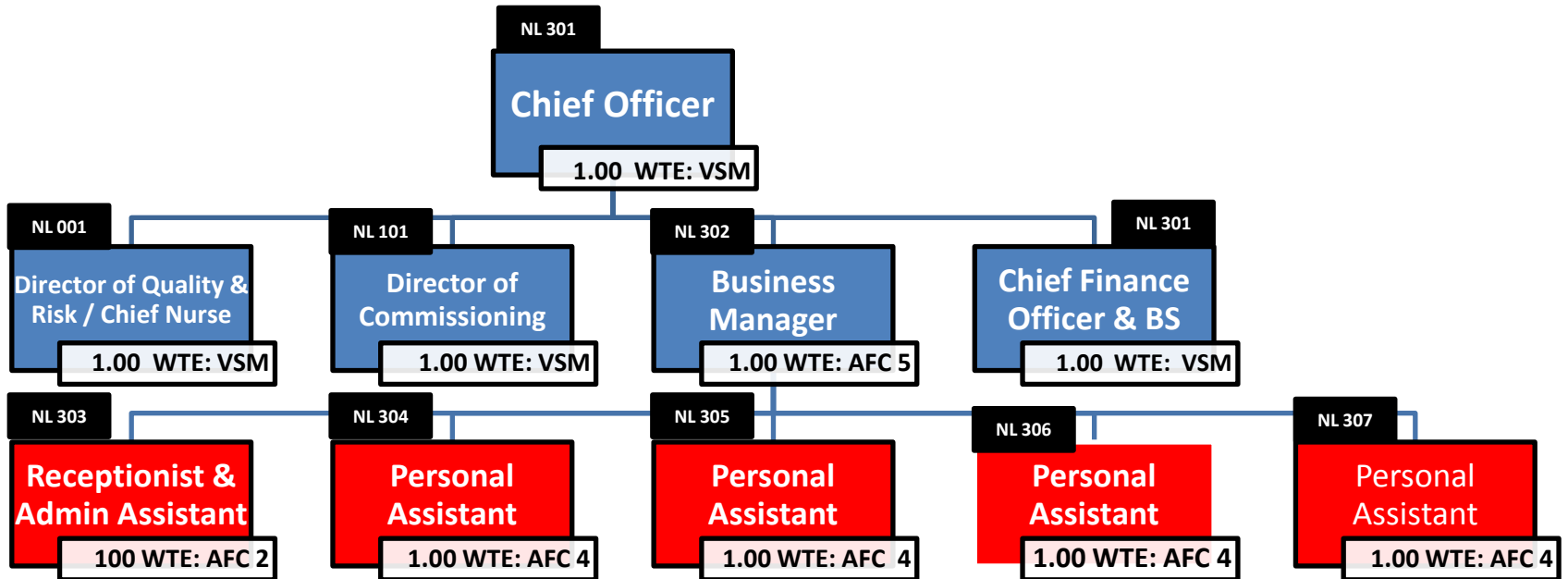
## Main Extra Areas Covered :

- OD
- EPRR & Business Continuity
- Equality & Diversity

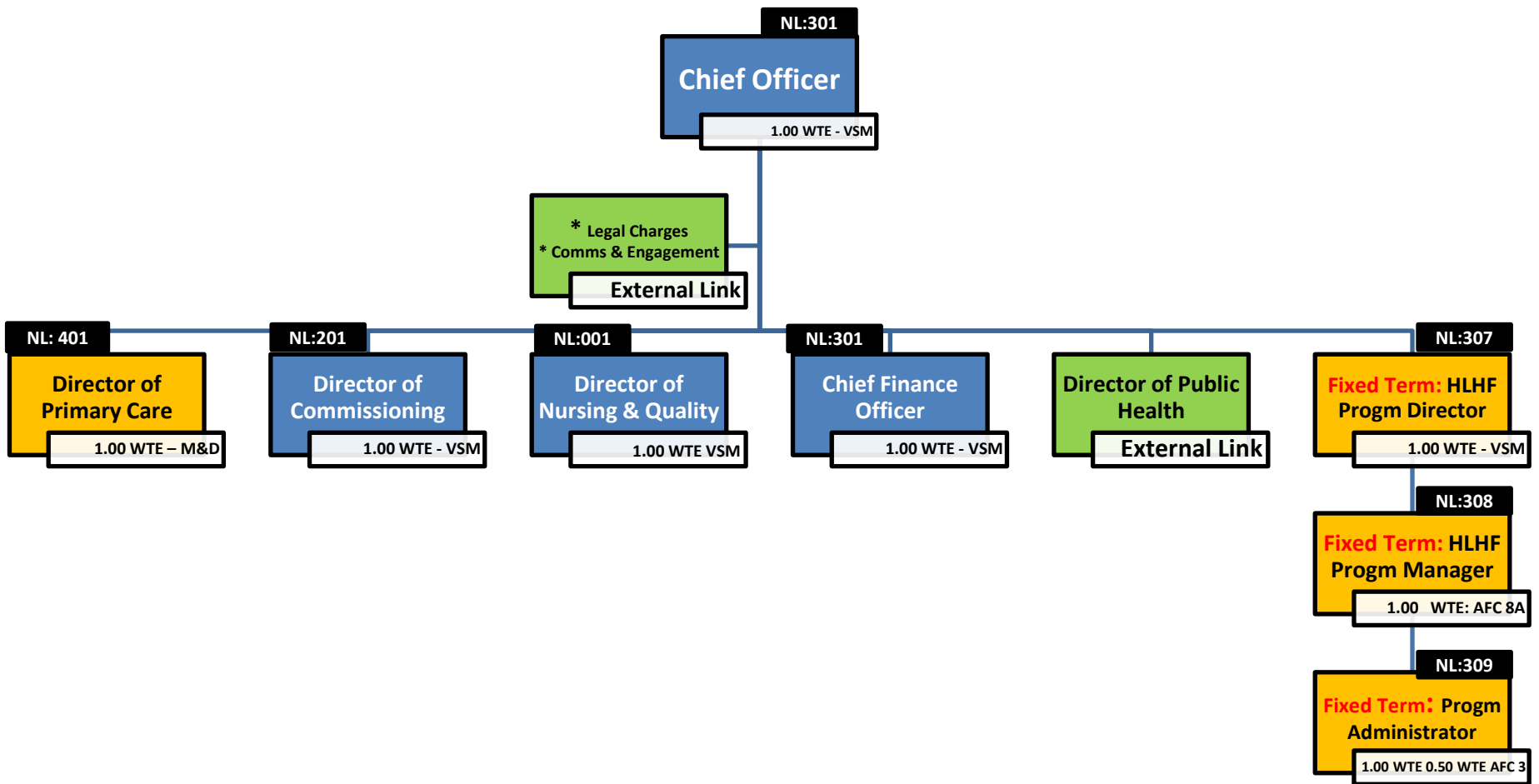
\* IT  
\* Estates & NHS Property Services  
\* Sustainability  
**External Links**



# 4A) EXISTING CORPORATE SERVICES DIRECTORATE STRUCTURE



# 4B) NEW CORPORATE SERVICES DIRECTORATE STRUCTURE



## 5A) EXISTING PRIMARY CARE DIRECTORATE STRUCTURE.

PLEASE NOTE THAT CURRENTLY THERE IS NO SEPARATE PRIMARY CARE DIRECTORATE, THOUGH THE MEDICAL DIRECTOR WAS INCLUDED ON THE NURSING & QUALITY STRUCTURE.

# 5B) NEW PRIMARY CARE DIRECTORATE STRUCTURE

